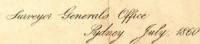
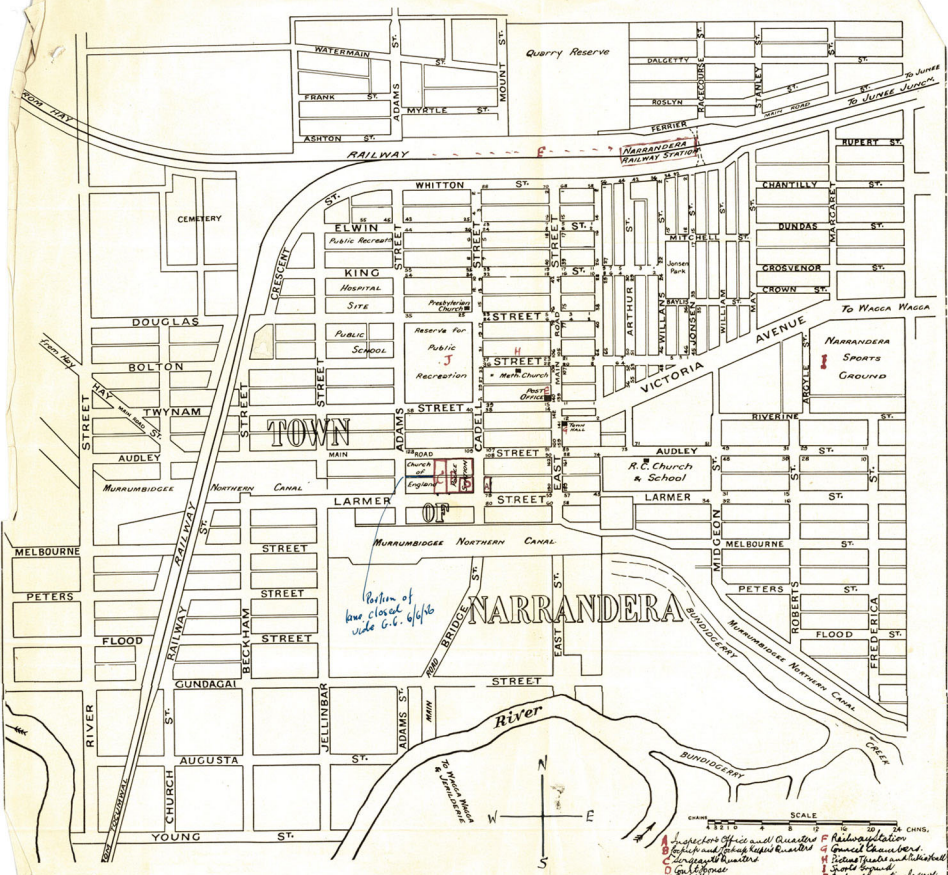


## NEW SOUTH WALES.





Portion of  
here closed  
vide G.O. 6/10/10

- A. Magistrate's Office and Auctioneer  
 B. Police and General Hospital  
 C. General Store  
 D. General Store  
 E. General Store  
 F. General Store  
 G. General Store  
 H. General Store  
 I. General Store  
 J. General Store  
 K. General Store  
 L. General Store  
 M. General Store  
 N. General Store  
 O. General Store  
 P. General Store  
 Q. General Store  
 R. General Store  
 S. General Store  
 T. General Store  
 U. General Store  
 V. General Store  
 W. General Store  
 X. General Store  
 Y. General Store  
 Z. General Store



*Narrandera.*

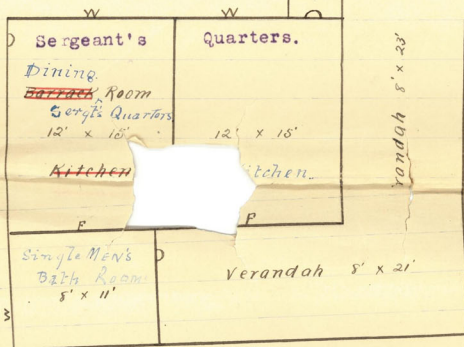
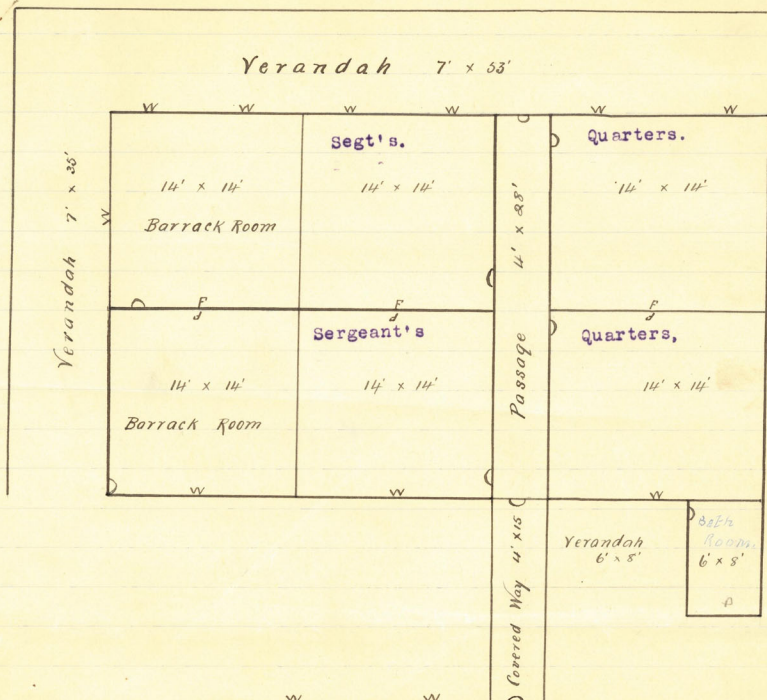
<i>Larmer Street.</i>			
<i>Cadell Street</i>	Sub-Inspectors Office and Residence. Lot 1. Section 17.  2 Rods.	Lock-up & Lockup-keepers Residence. Lot 3. Section 18.  1 Rod. 14 Pchs.	Police Station and Barracks. Lot 4. Section 18.  2 Rods 9 Pchs.
	Lot 6. Section 18.  1 Rod 14 Pchs.	Lot 7. Section 18.  2 Rods. 17 Pchs.	Lot 8. Section 18.  2 Rods 9 Pchs.
<i>Audley Street.</i>			

Town of Narrandera.

County, Cooper.

Parish Narrandera

Verandah 7' x 53'



Police Station & Barracks  
and SERGEANT'S QUARTERS.

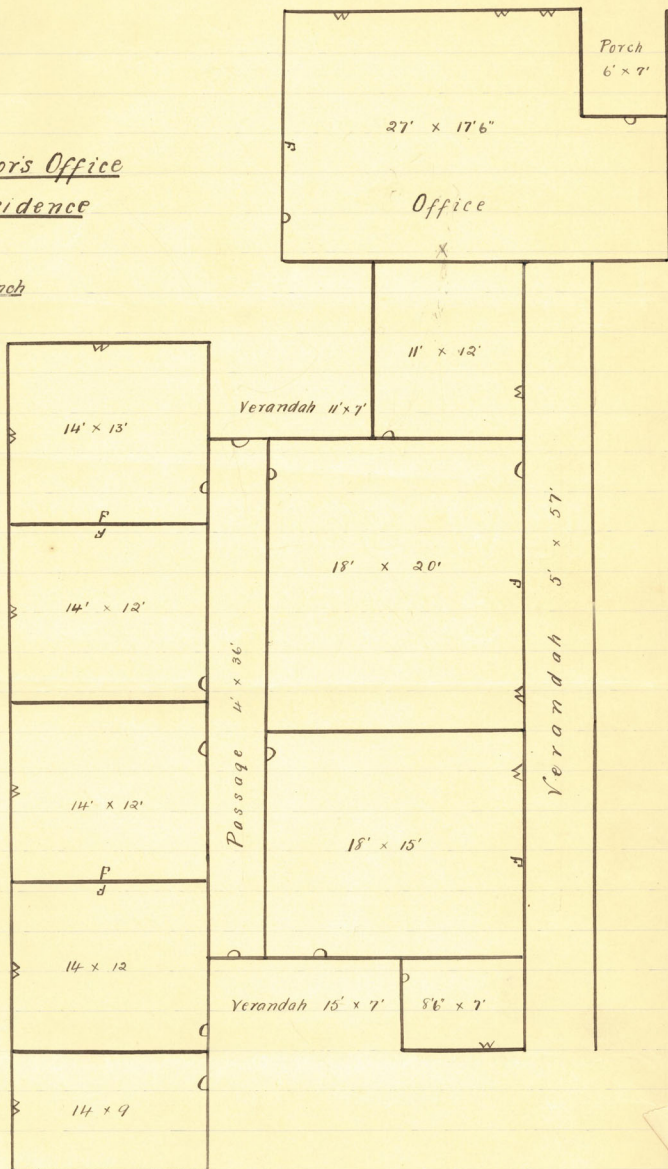
Scale - 8' to inch.

Harmer Street.

*Varrandera.*

Sub-Inspector's Office  
and Residence

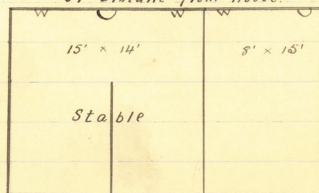
Scale 8' to inch



*Sub-Inspector's Office*

37' Distant from House.

Stable converted into  
garage - Pps.  
32/T.11435/1373

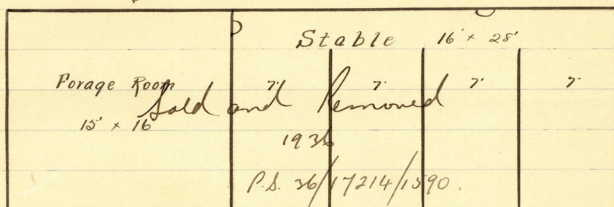




4-1-11  
*Narrandera.*

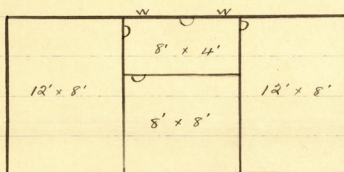
Back Verandah of Police Station

*45' from Police Station*



*75' from Porage Room*

Old Lock-up new Store.



Narrandera.

Double Gate

Police Paddock

53 Acres

Revised 1928.  
24/5852.

4201 ft

Reserve No. 8695

County Cooper

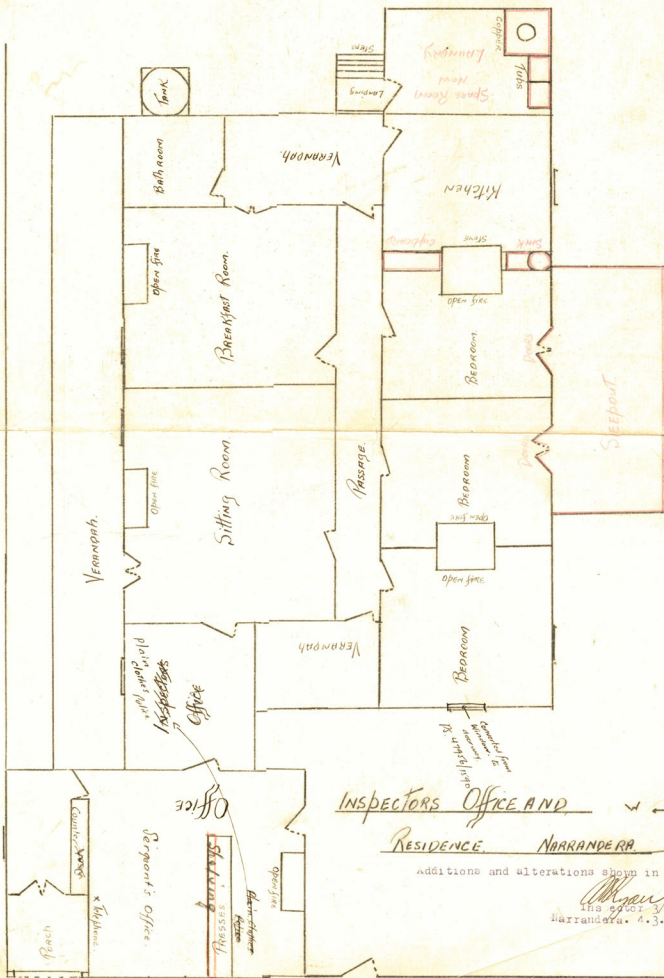
Parish Narrandera.

LARNER STREET.

INSPECTORS Office AND  
RESIDENCE NARRANDERA

Additions and alterations shown in red.

Inspector 3/c.  
Narrandera. 4.3.36.





POLICE DEPARTMENT,  
Commissioner's Office,  
SYDNEY.

24 FEB 1938

The Officer-in-Charge of Police,  
NARRANDERA.

Please attach:-

- (a) ~~A ground plan of the Police premises at Narrandera.~~  
The dimensions of each room, the positions of windows and doors and the purpose for which each room or portion of the premises is at present used should be indicated on the plan.
- (b) A locality plan showing the situation of the Police buildings in the town. A comprehensive plan is not required. All that is necessary is a plan showing the position of the Police buildings in their relationship to the principal part of the township, the Post Office, Railway Station, Town Hall, etc., as the case may be. The streets immediately adjacent to the Police premises only need be shown.

The cardinal points of the compass, north, south, east and west, should be indicated on each plan.

No special report should be necessary. The plans should merely be returned to this Office direct with a brief forwarding report on the bottom of this sheet.

MAR 3 39 AM

*W. J. M.*  
Deputy Commissioner of Police.

*736/152*

The Commissioner of Police,  
SYDNEY.

A plan of Narrandera township, drawn to scale, has been obtained, and is attached. The information required has been marked on the plan.

*John M. Willis*  
Acting Inspector.

